

**NEW!**

Comprehensive  
program  
expansion



**All running smoothly:**  
Tire changers and wheel  
balancers from Bosch



**BOSCH**

Invented for life

- ▶ TCE 4540
  - ▶ TCE 4460 / TCE 4465
  - ▶ TCE 4420 / TCE 4425
  - ▶ TCE 4320 / TCE 4325
  - ▶ TCE 4220 / TCE 4225
  - ▶ WBE 4510 / WBE 4515
  - ▶ WBE 4420 / WBE 4425
  - ▶ WBE 4220 / WBE 4225
  - ▶ WBE 4100 / WBE 4110 / WBE 4140
- Top service for all passenger cars and transporters
  - Strong service for wide tires, UHP and run-flat tires
  - Well equipped for the standard tire market
  - Fast service with manual lock
  - Entry into tire service
  - Balancing with laser tire diagnosis
  - All-rounders with loads of comfort
  - Digital wheel balancer for large tires
  - Entry into wheel balancing service



# Tire changers and wheel balancers:

## Profitable service with top technology from Bosch



All tire experts know it: Time is of the essence in tire service and only efficient and precise work ensures customer satisfaction and safeguards economy.

Tire service for all tires and rims on passenger vehicles, light commercial vehicles and motorcycles is still a lucrative area of business in the workshop. The choice of tire service is an important decision.

The new generation of tire changers and wheel balancers from Bosch have versatility, time saving operation, tire protection and safety in common.

### **Optimal technology for profitable tire service**

Wheels and tires are important turnover generators in workshop business. Winter tires, spare tires, wide tires and light-alloy rims guarantee high sales. Tire service, however, is subject to high market pressure.

The solution for the workshop is fast and efficient work and comprehensive fulfillment of customer desires. For both, the right technical equipment is needed. It is precisely with newer vehicles and when refitting wheel and tire combinations that tire types are selected that are difficult to handle if modern tire service devices are not available.

### **Simple handling instead of "awkward tires"**

Bosch offers the workshop tire service technology in the form of a comprehensive range of highly modern tire changers and wheel balancers. In accordance with individual positioning in tire service, every company will find optimum technology in this range for higher efficiency combined with easy and convenient operation.

# New! TCE 4540:

Top service for all passenger cars and transporter



TCE 4540



TCE 4540 with  
new middle centering flange

## TCE 4540: Hydraulic tire changer of the latest generation

The top machine for tire service for all kinds of passenger cars and light commercial vehicle tires: Standard, PAX, run-flat and UHP tires up to 30" rim diameter and a width of 22" can be worked on quickly and conveniently.

### The TCE 4540 combines high working speed, highest possible level of material care and simple, precise controls:

- ▶ Powerful hydraulic unit for effortless fitting of even extremely difficult tires
- ▶ Simple, precise controls
- ▶ Two working speeds with three-phase systems
- ▶ Clockwise and counterclockwise rotation
- ▶ Quick and easy positioning of the assembly head
- ▶ Pneumatic lift for tires up to 80 kg
- ▶ Auxiliary arm with follow-on bead depressor
- ▶ Fast tire inflation with foot pedal actuation
- ▶ Depository at side for small parts

## Highlights:

- ▶ New middle centering flange with pneumatic closure facilitates and accelerates clamping
- ▶ Assembly tool with new design replaces the mounting lever even for UHP tires
- ▶ Swivelable operator unit for ergonomic work
- ▶ Removal rollers assure trouble-free removal of the beads without damaging them

Technical data	TCE 4540
Rim diameter	10" - 30"
Rim width	3" - 22"
Max. wheel diameter	1,250 mm
Pneumatic air pressure	8 - 12 bar
Motor output	1.25 kW
Weight	500 kg
W x H x D in mm (max.)	1,880 x 1,700 x 1,850

# TCE 4460 and TCE 4465:

Strong service for wide tires, UHP and run-flat



TCE 4460 with TCE 100 for "leverless" tire changing



TCE 4460

## TCE 4460 and 4465: Automatic devices for wide-tire service. Now even more convenient with leverless fitting with the TCE 100

Tire changers TCE 4460 and TCE 4465 for high throughput and fitting of wider wheels up to 1,200 mm diameter. With the optional TCE 100, assembly is even possible without a mounting lever.

- ▶ Release of assembly head at the push of a button
- ▶ Fast tire throughput thanks to two fitting speeds and innovative foot pedal control
- ▶ Variable cast-iron clamping jaws
- ▶ Rim protection through aluminum jaws and sliders
- ▶ Clockwise and counterclockwise rotation
- ▶ Two working speeds with three-phase systems

### Highlights:

- ▶ Tilting and pneumatic liftable assembly column and low working height
- ▶ Adjustable bead breaker
- ▶ Inclined assembly head facilitates fitting of the lower bead
- ▶ Clamping jaws of hardened steel provide a better grip and a longer service life

## Other interesting special accessories and important variations:

- ▶ Follow-on bead depressor and auxiliary arm (TCE 320) guide the tire bead reliably into the rim base
- ▶ Leverless fitting with the newly developed automatic assembly head (TCE 100)
- ▶ Motorcycle and motor scooter attachments
- ▶ Fast tire inflation with clamping claws (equipment supply TCE 4465)
- ▶ TCE 4460 S12 and TCE 4465 S12 with assembly head TCE 100 (equipment supply)
- ▶ TCE 4460 S40: WdK-approved (German Rubber Manufacturers' Association) for fitting run-flat tires

Technical data	TCE 4460 / TCE 4465
External rim tension	12" - 33"
Rim width	3" - 15" (with TCE 100 up to 13")
Max. wheel diameter	1,200 mm
Pneumatic air pressure	8 - 12 bar
Motor output	1.25 kW
Weight	267 kg / 278 kg
W x H x D in mm (max.)	1,250 x 1,950 x 2,000

# TCE 4420 and TCE 4425:

## Well equipped for the standard tire market



TCE 4420



TCE 4425

### TCE 4420 and TCE 4425:

#### Efficient service with upgrading option

For fast processing of standard and wide tires. Comprehensive special accessories available for processing small cross-section tires.

- ▶ Automatic rim release prevents damage to the rims
- ▶ Clockwise and counterclockwise rotation
- ▶ Two working speeds with three-phase systems

#### Highlights:

- ▶ Pneumatic tilting assembly column
- ▶ Inclined assembly head facilitates fitting of the lower bead
- ▶ Clamping jaws of hardened steel provide a better grip and a longer service life



TCE 300

### Other interesting special accessories and important variations:

- ▶ Through retrofitting the auxiliary column (TCE 300) and the auxiliary arm, even tires with a hard bead can be fitted easily and gently
- ▶ Integrated tire inflation with assembly claws (equipment supply TCE 4425)
- ▶ TCE 4420 S40: WdK-certified (German Rubber Manufacturers' Association) – includes the special accessories recommended by the WdK for professional processing of run-flat tires

Technical data	TCE 4420 / TCE 4425
Rim clamping	10" - 23"
Rim width	3" - 11"
Max. wheel diameter	1,000 mm
Pneumatic air pressure	8 - 12 bar
Motor output	1.25 kW
Weight	229 kg / 242 kg
W x H x D in mm	1,000 x 1,830 x 1,720

# New! TCE 4320 and TCE 4325:

## Fast service with manual lock



TCE 4320



TCE 4325

### TCE 4320 and TCE 4325:

#### For professional entry into tire service

Entry into the tire changer technology with tilting assembly column.

- ▶ Tilting assembly column and manual locking of the assembly head
- ▶ Clockwise and counterclockwise rotation
- ▶ Extendable with comprehensive special accessories

#### Highlights:

- ▶ Separate locking lever secures the assembly column and assembly arm at the same time
- ▶ Automatic rim release during locking prevents damage to the rims
- ▶ Clamping jaws of hardened steel provide a better grip and a longer service life

#### Other interesting special accessories and important variations:

- ▶ Through retrofitting the auxiliary column (TCE 300) and the auxiliary arm, even tires with a hard bead can be fitted easily and gently
- ▶ Integrated tire inflation with assembly claws (equipment supply TCE 4325)

Technical data	TCE 4320 / TCE 4325
Rim clamping	10" - 23"
Rim width	3" - 11"
Max. wheel diameter	1,000 mm
Pneumatic air pressure	8 - 12 bar
Motor output	1.25 kW
Weight	198 kg / 210 kg
W x H x D in mm	950 x 1,830 x 760

# TCE 4220 and TCE 4225:

## Entry into tire service



TCE 4220



TCE 4225

### TCE 4220 and TCE 4225:

#### Entry level solution with swing arm

Tire changer with swing arm especially for smaller companies.

- ▶ The mechanical rim release prevents damage to the rim during assembly
- ▶ Comfortable working position thanks to bead breaker integrated at the side
- ▶ Stable centering of the rim without presetting
- ▶ Clockwise and counterclockwise rotation
- ▶ Fast inflation system can be retrofitted as special accessory

#### Highlights:

- ▶ Swing arm
- ▶ Simple operation and efficient technology
- ▶ Two-sided pedal for rotary motion of the clamping plate for ideal work position for users

#### Other interesting special accessories and important variations:

- ▶ Through retrofitting the auxiliary column (TCE 200) and the auxiliary arm, even tires with a hard bead can be fitted easily and gently
- ▶ Comprehensive special accessories for motorcycle, quad bikes and motor scooters
- ▶ Integrated tire inflation with assembly claws (equipment supply TCE 4225)

Technical data	TCE 4220 / TCE 4225
Rim clamping	10" - 23"
Rim width	3" - 10"
Max. wheel diameter	1,000 mm
Pneumatic air pressure	8 - 12 bar
Motor output	0.55 kW
Weight	202 kg / 213 kg
W x H x D in mm	1,000 x 1,740 x 1,150 / 1,300



TCE 200

# TCE Tire changers:

## Order numbers and special accessories

<b>TCE 4220</b>	a x bbb V, cc/cc Hz	1 694 100 xxx
	a x bbb V, cc/cc Hz	1 694 100 xxx
<b>TCE 4225</b>	a x bbb V, cc/cc Hz	1 694 100 xxx
	a x bbb V, cc/cc Hz	1 694 100 xxx
<b>TCE 4320</b>	a x bbb V, cc/cc Hz	1 694 100 xxx
	a x bbb V, cc/cc Hz	1 694 100 xxx
<b>TCE 4325</b>	a x bbb V, cc/cc Hz	1 694 100 xxx
	a x bbb V, cc/cc Hz	1 694 100 xxx
<b>TCE 4420</b>	a x bbb V, cc/cc Hz	1 694 100 xxx
	a x bbb V, cc/cc Hz	1 694 100 xxx
<b>TCE 4425</b>	a x bbb V, cc/cc Hz	1 694 100 xxx
	a x bbb V, cc/cc Hz	1 694 100 xxx

<b>TCE 4460</b>	a x bbb V, cc/cc Hz	1 694 100 xxx
	a x bbb V, cc/cc Hz	1 694 100 xxx
<b>TCE 4460 S12</b>	a x bbb V, cc/cc Hz	1 694 100 xxx
	a x bbb V, cc/cc Hz	1 694 100 xxx
<b>TCE 4460 S40</b>	a x bbb V, cc/cc Hz	1 694 100 xxx
	a x bbb V, cc/cc Hz	1 694 100 xxx
<b>TCE 4465</b>	a x bbb V, cc/cc Hz	1 694 100 xxx
	a x bbb V, cc/cc Hz	1 694 100 xxx
<b>TCE 4465 S12</b>	a x bbb V, cc/cc Hz	1 694 100 xxx
	a x bbb V, cc/cc Hz	1 694 100 xxx
<b>TCE 4540</b>	a x bbb V, cc/cc Hz	1 694 100 xxx
	a x bbb V, cc/cc Hz	1 694 100 xxx



**IT kit (not necessary for TCE 4225, TCE 4245, TCE 4325, TCE 4425 and TCE 4465)**

Order no.: 1 695 103 858



**IT kit (only for TCE 4460)**

Order no.: 1 695 106 188



**Motorbike adaptors for TCE 422x, TCE 432x and TCE 442x (4 pcs.)**

Order no.: 1 695 105 438



**Scooters adaptors for TCE 422x, TCE 432x and TCE 442x (4 pcs.)**

Order no.: 1 695 105 440



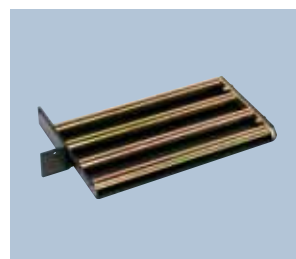
**Motorbike adaptor for TCE 4245 and TCE 446x**

Order no.: 1 695 105 439



**Scooter adaptor for TCE 4245 and TCE 446x**

Order no.: 1 695 105 441



**Roller board**

Order no.: 1 695 900 005



**Storage kit (not with side lift)**

Order no.: 1 695 900 003

# TCE Tire changers: Special accessories



**Bead pressing device  
(lower profile)**

Order no.: 1 695 103 261



**Bead pressing device  
(higher profile)**

Order no.: 1 695 103 216



**Bead breaking bearing motorbike  
wheel on TCE 421x, TCE 422x,  
TCE 423x, TCE 432x, TCE 441x,  
TCE 442x and TCE 445x**

Order no.: 1 695 103 252



**Bead breaking bearing motor-  
bike wheel on TCE 4245 and  
TCE 446x**

Order no.: 1 695 105 442



**Mounting head kit motorbike**

Order no.: 1 695 103 210



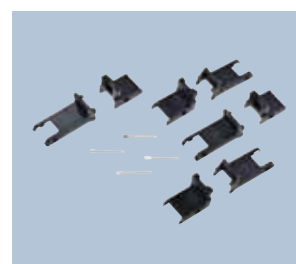
**Plastic protection for bead  
breaker (in the scope of  
delivery of TCE 446x)**

Order no.: 1 695 102 090



**Jaws plastic protection for 20"  
working table (not for TCE 4245)**

Order no.: 1 695 105 083



**Jaws plastic protection for  
TCE 4245 and TCE 446x  
(Already in the scope of deliv-  
ery of TCE 446x)**

Order no.: 1 695 105 251



**Column tongue (5 pcs.)**

Order no.: 1 695 101 608



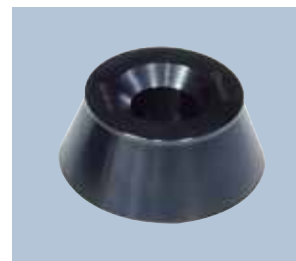
**Plastic rim protection**

Order no.: 1 695 105 191



**Light truck adapter kit**

Order no.: 1 695 104 054



**Light transport vehicle cone  
(88 - 132mm)**

Order no.: 1 695 653 449



**Flange for reversed rims and  
without central hole  
(for TCE 4540)**

Order no.: 1 695 105 904



**Alu spacer (for TCE 4540)**

Order no.: 1 695 105 855



**Plastic tool protection set  
(10 pcs.) (for TCE 4540)**

Order no.: 1 695 105 905



**Michelin Eurodairu inflation  
gun (only for TCE 4220 and  
TCE 4420)**

Order no.: 1695 042 877

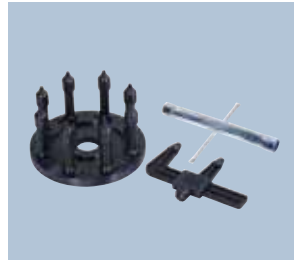
# TCE Tire changers: Special accessories



**5-holes reversed well rims  
flange (for TCE 4540)**  
Order no.: 1 695 105 906



**6-holes reversed well rims  
flange (for TCE 4540)**  
Order no.: 1 695 105 907



**8-holes reversed well rims  
flange (for TCE 4540)**  
Order no.: 1 695 105 908



**Tire lift (not with storage kit)**  
Order no.: 1 695 900 025



**TCE 100 - Automatic mounting  
head for the upgrade of  
TCE 445x and TCE 446x**

Order no.: 1 695 105 609



**Plastic protection set for  
TCE 100**

Order no.: 1 695 105 608



**TCE 200 - Optional column with  
helper device for TCE 421x,  
TCE 422x and TCE 423x**

Order no.: 1 695 900 002



**TCE 300 - Optional column with  
sliding arm and bead breaking  
tool for TCE 432x, TCE 4410,  
TCE 422x and TCE 445x**

Order no.: 1 695 900 001



**TCE 320 - helper device for  
TCE 446x**

Order no.: 1 695 900 032



**Accessory arm for RFT  
(only with TCE 300)**

Order no.: 1 695 102 985



**Accessory arm for PAX tires  
(only with TCE 300)**

Order no.: 1 695 102 666



**Press-on cone for TCE 3xx**

Order no.: 1 695 103 905



**Mounting lever (WdK-Model)**

Order no.: 1 695 105 190

# WBE 4510 and WBE 4515:

## Balancing with laser tire diagnosis



WBE 4510



WBE 4515

### WBE 4510 and WBE 4515: Top machine in the latest generation – fast, precise, comfortable

In addition to regular measurement results, the WBE 45 series permits well-founded tire diagnostics to help diagnose further sources of faults at tires and rims.

- ▶ Effortless lifting and positioning of the tire through an integrated tire lift
- ▶ Simple operation and efficient technology
- ▶ Different static and dynamic balancing options
- ▶ Matching of rim and tire imbalance
- ▶ Attachment of concealed weights behind the spokes
- ▶ Timesaving automatic tire positioning
- ▶ Multiple-user function of software
- ▶ Electronic scanning arm for quick recording of the rim diameter and distance
- ▶ Automatic opening and closing of the tire cover
- ▶ Quiet motor
- ▶ Pneumatic wheel clamping with the version WBE 4515
- ▶ Easily readable TFT-monitor

### Highlights:

- ▶ Balancing of passenger car and transporter wheels.  
Motorcycle wheels also possible with optional accessories
- ▶ Measurements with the laser measuring system:  
Rim width, true running and tire conicity measurement
- ▶ Suggestion for optimum assembly position of the wheel on the vehicle
- ▶ Printout of measurement results for customer discussions (printer set available as special accessory)

Technical data	WBE 4510 / WBE 4515
Rim diameter	10" - 26"
Rim width	1" - 20"
Max. wheel diameter	1,050 mm
Maximum wheel weight	70 kg
Balancing speed	190 rpm
Pneumatic air pressure	8 - 12 bar
Weight	355 kg
W x H x D in mm	2,030 x 1,980 x 976

# WBE 4420 / 4425 and WBE 4220 / 4225:

## Allrounders with loads of comfort



WBE 4420 with monitor



WBE 4220 with display

### WBE 4420 and WBE 4425:

#### Comfortable monitor model for high performance

#### WBE 4220 and WBE 4225 with brilliant digital display

The WBE 44 series consists of wheel balancers with TFT-monitors designed for balancing passenger car, motorcycle and transporter wheels. Particularly space-saving and slim design.

- ▶ Different static and dynamic balancing options
- ▶ Programmable function keys for targeted and timesaving access to software menus
- ▶ Matching of rim and tire imbalance
- ▶ Attachment of concealed weights behind the spokes
- ▶ Multiple-user function of software
- ▶ Space-saving divided wheel cover
- ▶ Foot pedal brake for locking the wheel during weight attachment
- ▶ Pneumatic wheel clamping with the version WBE 4425 and WBE 4225
- ▶ Easily readable TFT-monitor
- ▶ WBE 4220 and WBE 4225 with easily readable digital display even in bad lighting conditions
- ▶ Optional light and laser ring for lighting the interior of the rim and positioning aid for fitting the balancing weights (in equipment supply of versions S10)
- ▶ WBE 4420 and WBE 4425 have programmable functions keys for targeted access to software menus

### Highlights:

- ▶ Placement surface spread over two levels
- ▶ Electronic scanning and data arm for recording all necessary wheel parameters
- ▶ Stop function on scanning arm for installing adhesive weights
- ▶ Wheel brake and positioning aid

Technical data	WBE 4420 / WBE 4425
Rim diameter	12" - 30"
Rim width	1" - 21"
Max. wheel diameter	1,200 mm
Maximum wheel weight	80 kg
Balancing speed (60 Hz / 50 Hz)	250 / 210 rpm
Weight	186 kg / 199 kg
W x H x D in mm	1,194 x 1,686 x 1,600

Technical data	WBE 4220 / WBE 4225
Rim diameter	12" - 30"
Rim width	1" - 21"
Max. wheel diameter	1,200 mm
Maximum wheel weight	80 kg
Balancing speed (60 Hz / 50 Hz)	250 / 210 rpm
Weight	163 kg / 175 kg
W x H x D in mm	1,194 x 1,686 x 1,600

# WBE 4100, WBE 4110 and **New!** WBE 4140: Entry into wheel balancing service



WBE 4140



WBE 4110

## WBE 4100, WBE 4110 and WBE 4140: Compact technology and high reliability

### New: WBE 4140 with brilliant monitor display

Economic entry level solution for efficient wheel balancing servicing of passenger cars, motorcycles and light commercial vehicles.

- ▶ Different static and dynamic balancing programs
- ▶ Matching function integrated in the software to minimize rim and tire imbalance
- ▶ Attachment of concealed weights behind the spokes
- ▶ Multiple-user function of software
- ▶ Foot pedal brake for locking the wheel during weight attachment
- ▶ WBE 4140 with TFT-monitor, WBE 4110 and WBE 4100 with double display
- ▶ Wheel hood in equipment supply

## Highlights:

- ▶ Scanning arm for recording the diameter and distance of the rim (equipment supply WBE 4140 and WBE 4110)
- ▶ Data arm available for recording the rim width (special accessories WBE 4140)

Technical data	WBE 4100 / WBE 4110
Rim diameter	8" - 24"
Rim width	2" - 19"
Max. wheel diameter	820 mm
Maximum wheel weight	60 kg
Balancing speed (60 Hz / 50 Hz)	167 rpm
Weight	97 kg / 87 kg
W x H x D in mm	1,050 x 1,300 x 900

Technical data	WBE 4140
Rim diameter	8" - 26"
Rim width	2" - 19"
Max. wheel diameter	820 mm
Maximum wheel weight	65 kg
Balancing speed (60 Hz / 50 Hz)	245 / 207 rpm
Weight	85 kg
W x H x D in mm	1,135 x 1,360 x 1,000

# WBE Wheel balancer:

## Order number and special accessories

<b>WBE 4100</b>	a x bbb V, cc/cc Hz	1 694 100 xxx
	a x bbb V, cc/cc Hz	1 694 100 xxx
<b>WBE 4110</b>	a x bbb V, cc/cc Hz	1 694 100 xxx
	a x bbb V, cc/cc Hz	1 694 100 xxx
<b>WBE 4140</b>	a x bbb V, cc/cc Hz	1 694 100 xxx
	a x bbb V, cc/cc Hz	1 694 100 xxx
<b>WBE 4220</b>	a x bbb V, cc/cc Hz	1 694 100 xxx
	a x bbb V, cc/cc Hz	1 694 100 xxx
<b>WBE 4225</b>	a x bbb V, cc/cc Hz	1 694 100 xxx
	a x bbb V, cc/cc Hz	1 694 100 xxx
<b>WBE 4420</b>	a x bbb V, cc/cc Hz	1 694 100 xxx
	a x bbb V, cc/cc Hz	1 694 100 xxx

<b>WBE 4420 S10</b>	a x bbb V, cc/cc Hz	1 694 100 xxx
	a x bbb V, cc/cc Hz	1 694 100 xxx
<b>WBE 4425</b>	a x bbb V, cc/cc Hz	1 694 100 xxx
	a x bbb V, cc/cc Hz	1 694 100 xxx
<b>WBE 4425 S10</b>	a x bbb V, cc/cc Hz	1 694 100 xxx
	a x bbb V, cc/cc Hz	1 694 100 xxx
<b>WBE 4510</b>	a x bbb V, cc/cc Hz	1 694 100 xxx
	a x bbb V, cc/cc Hz	1 694 100 xxx
<b>WBE 4515</b>	a x bbb V, cc/cc Hz	1 694 100 xxx
	a x bbb V, cc/cc Hz	1 694 100 xxx



**Tire elevator**

Order no.: 1 695 900 004



**Laser pointer with lighting system (already in the scope of delivery of S10 versions)**

Order no.: 1 695 654 994



**Electronic rim with measuring arm (only for WBE 4140)**

Order no.: 1 695 655 885



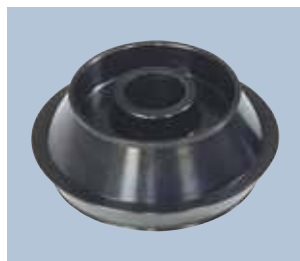
**Quick bolt kit for 3-, 4-, 5- hole flange**

Order no.: 1 695 612 100



**Light transport vehicle cone (88 - 132mm)**

Order no.: 1 695 653 449



**4th cone (dia. 120 - 174 mm)**

Order no.: 1 695 606 300



**Cone spacer**

Order no.: 1 695 606 200



**Three arm flange for light trucks**

Order no.: 1 695 653 420



**3-, 4-, 5-hole flange**

Order no.: 1 695 654 043



**Certified weight for calibration**

Order no.: 1 695 654 376



**Large diameter clamping hood**

Order no.: 1 695 653 888



**Rubber cup**

Order no.: 1 695 624 800

# WBE wheel balancers:

## Special accessories



**Special centering kits for  
GM / OPEL**

Order no.: 1 695 655 323



**Special centering kits for  
GM / OPEL Expert**

Order no.: 1 695 655 324



**Special centering kits for BMW  
(without middle centering flange)**

Order no.: 1 695 655 325



**Special centering kits for  
Daimler / Smart (without  
middle centering flange)**

Order no.: 1 695 655 326



**Centering sleeve Mercedes  
(66,7 / 84 - 85 mm)**

Order no.: 1 695 654 919



**Centering sleeve 58 / 65 mm  
(f.e. Peugeot)**

Order no.: 1 695 655 780



**Centering sleeve 55 / 60 / 65  
mm (f.e. Renault/Peugeot/  
Citroen)**

Order no.: 1 695 655 781



**Four centering cone set  
(42 - 111.5 mm)**

Order no.: 1 695 655 293



**DuoExpert System (2 collets in  
a case 54-75mm)**

Order no.: 1 695 625 000



**Set of QuickPlates (4-, 5- and  
6-holes-plates)**

Order no.: 1 695 655 294



**QuickPlate 4-holes with  
standard heads**

Order no.: 1 695 655 295



**QuickPlate 5-holes with  
standard heads**

Order no.: 1 695 655 296



**QuickPlate 6-holes with stand-  
ard heads**

Order no.: 1 695 655 297



**Wall board QuickPlate**

Order no.: 1 695 655 298



**FixPlate world kit (4 FixPlates,  
10 Studs/25 heads /1 Wall-  
board)**

Order no.: 1 695 655 299



**FixPlate No. 1 - 4x98/4x100/  
4x101.6/4x108/4x114.3/  
7x150/4x170 (without studs  
and heads)**

Order no.: 1 695 655 300

# WBE wheel balancers:

## Special accessories



**FixPlate No. 2 - 5x98/5x108/5x110/5x115/5x120.65/5x135/5x154.95 (without studs and heads)**

Order no.: 1 695 655 301



**FixPlate No. 3 - 5x100/5x120/5x114.3/5x120/5x127/5x130/5x139.7/5x150/5x165.1 (without studs and heads)**

Order no.: 1 695 655 302



**FixPlate No. 4 - 3x98/3x112/3x114.3/3x115/3x127/3x130/6x135/6x139.7/4x165.1 (without studs and heads)**

Order no.: 1 695 655 303



**Plug in Stud for FixPlate without head**

Order no.: 1 695 655 304



**Wall board FixPlate**

Order no.: 1 695 655 305



**Head / short taper / Ø 24.5mm / length head 28mm / total 80mm**

Order no.: 1 695 655 306



**Head / short taper / Ø 24.5 mm / length head 38 mm / total 90 mm**

Order no.: 1 695 655 307



**Head / short taper / Ø 24.5mm / length head 38mm / total 90mm**

Order no.: 1 695 655 308



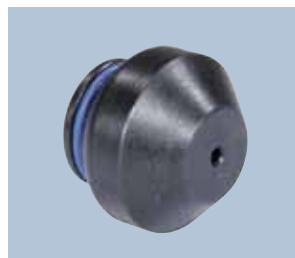
**Head / rounded head / Ø 24.5 mm / length head 38 mm / total 90 mm**

Order no.: 1 695 655 309



**Head / rounded head / Ø 24.5 mm / length head 48 mm / total 100 mm**

Order no.: 1 695 655 310



**Head / Range-/Landrover / Ø 34 mm / length head 28 mm / total 80 mm**

Order no.: 1 695 655 311



**Head / long taper / Ø 22.5 mm / length head 48 mm / total 100 mm**

Order no.: 1 695 655 312



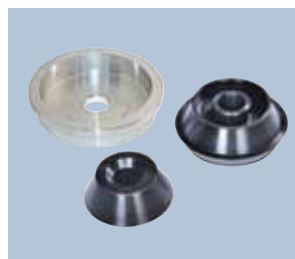
**Head / long taper / Ø 22.5 mm / length head 58 mm**

Order no.: 1 695 655 313



**Head / long taper / Ø 19mm / length head 55.6 mm**

Order no.: 1 695 655 314



**Set of light truck cones (88 - 174 mm)**

Order no.: 1 695 654 849



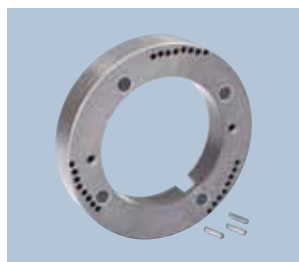
**Centering cone (168.5 - 194.5 mm)**

Order no.: 1 695 655 757

\*(without centering pin and bolt heads)

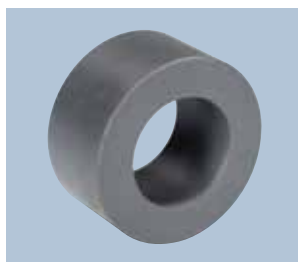
# WBE Wheel balancer:

## Special accessories



**Distance ring with magnets for Off-Road cone from the back incl. Pins (40 mm)**

Order no.: 1 695 655 316



**Polyamid spacer (donut) for Off-Road (40 mm)**

Order no.: 1 695 654 895



**Motorcycle flange (standard)**

Order no.: 1 695 654 039



**Monolever wheels centering (kit and shaft 19 mm)**

Order no.: 1 695 654 060



**Centering sleeve BMW K 100 SUITS (14 mm axle)**

Order no.: 1 695 654 518



**Quick Fix for 14 mm shaft**

Order no.: 1 695 654 117



**Quick Fix for 19 mm shaft**

Order no.: 1 695 655 321



**Adaptor Ducati, Triumph (19 mm axle)**

Order no.: 1 695 653 538



**Printer kit (complete with support) for WBE 451x**

Order no.: 1 695 654 956



**Centering shaft (Ø 10 mm) for conical shaft gripping length 177 mm**

Order no.: 1 695 653 430



**Centering shaft (Ø 14 mm) for conical shaft gripping length 233 mm**

Order no.: 1695 604 700



**Set of four flange adaptors, professional set with five sets of studs, colour-coded, two wall boards, wallchart and Off-Road spacer**

Order no.: 1 695 635 100



**Off-Road set with 2 flange plate adaptors, coloured-coded, two sets of studs incl. 1 wall board, wallchart and Off-Road spacer**

Order no.: 1 695 655 327

# Our **knowledge**, your **success**: Bosch-Diagnostics

Diagnostics – the key to the automotive workshop of the future. Motor vehicle systems are becoming increasingly complex; the demands placed on qualified diagnosis in workshops are rising. For professional service on modern vehicles, Bosch provides everything at one stop, perfectly coordinated: test equipment, software, technical training and hotline, supplemented by parts in initial equipment quality.



## **ESI[tronic]: Software for diagnostics and service**

- ▶ Simple operation
- ▶ Rapid access
- ▶ Modular structure
- ▶ Comprehensive market coverage
- ▶ Continually updated
- ▶ Universal operation regardless of manufacturer



## **Test Equipment: Matched to each workshop type**

- ▶ Optimized combination of hardware and software for rapid troubleshooting, qualified repair and high time savings
- ▶ PC-based, test equipment of the latest generation with extendable modules



## **Service Training: Knowledge as a factor of success**

- ▶ Comprehensive training programs for automotive workshops
- ▶ Practical training courses
- ▶ Highly qualified trainers with practical experience



## **Technical Hotline: Support from the system developer**

- ▶ Support in difficult technical situations
- ▶ Skills covering all brands and manufacturers

# Bosch – Your partner for the **workshop of the future.**

For over 120 years, Bosch has been finding ways and means to keep vehicles in motion to ensure that people get from A to B safely and comfortably. Bosch Automotive Aftermarket offers the trade and workshops a worldwide, unique combination of:

- ▶ efficient diagnostics
- ▶ innovative workshop equipment
- ▶ quick and reliable delivery service
- ▶ the most extensive range of replacement parts in the market

When this is all combined, not only the parts fit into place but also the time schedule, organization and the result.

## **Workshop tip:**

A professional tire service must always include a brake check. Bosch offers a comprehensive brake program, also for transporters.

**Diagnostics and parts: you only find both at Bosch.**



## **Brake components from Bosch for transporters and delivery vans**

From 100 to 0 in a few seconds. If it's safety and quality you want, there is no alternative. Braking systems from Bosch therefore meet all requirements and make no compromises.

Where to find Original Bosch Quality:

Robert Bosch GmbH  
Automotive Aftermarket  
Business Unit Diagnostics  
D-73201 Plochingen

[www.bosch-diagnostics.com](http://www.bosch-diagnostics.com)



# **BOSCH**

Invented for life