



SMT 300 Smoke machine tester

Leakfinder for diagnosing leaks in virtually any automotive system

**BOSCH**

Invented for life



The Bosch SMT 300 smoke machine tester is a full featured device which allows today's shop to perform various types of vehicle leak testing. The compact design and full complement of accessories makes this an ideal fit for any repair shop needing a workhorse of a smoke tester. Suitable for leak testing of any closed system found on today's vehicles. The size of a leak and its location can be determined in two steps. The device with an optional accessory can be effectively used for investigating leaks in fuel and exhaust systems.

Overview:

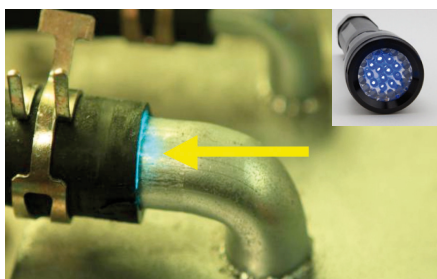
- ▶ The Leakfinder can be used to test systems conducting fuel vapors as well as other applications.
- ▶ You can test closed circuits such as intake and exhaust systems as well as find openings that let in wind and water.
- ▶ By using the integrated test mode, you can initially test closed systems without smoke and then introduce smoke as needed. You can also control the amount of smoke which makes it easier to find small leaks.
- ▶ This unit can be used to test the functioning of vehicle systems and avoid damage.

For investigating leaks in fuel systems may only use inert gas (nonflammable, CO₂ or nitrogen). An "Inert Gas Pack Kit" (compressed gas canister and adapter) can be ordered separately. The compressed gas canister comes empty and must be filled by an inert gas supplier.

You can also order a 7 bar nitrogen regulator for use with large nitrogen tanks in workshops. A cylinder hose (which can also be ordered separately) is needed for connecting to the SMT 300.



Vapors can be identified under white light

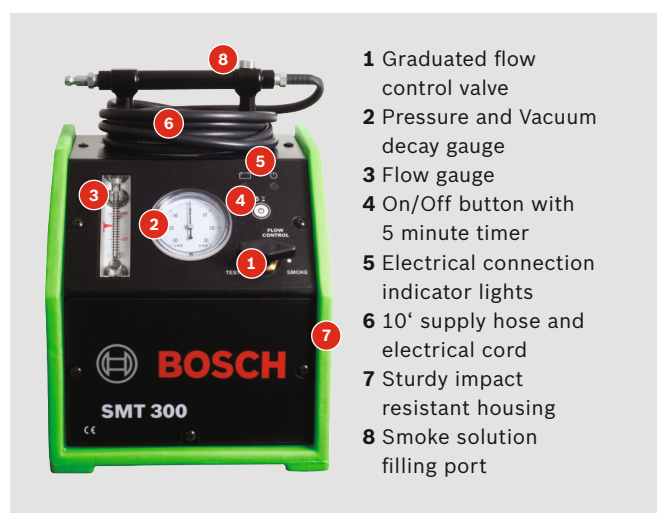


Dye can be identified under UV light with yellow glass



Leakfinder can also find leaks in exhaust systems





- 1 Graduated flow control valve
- 2 Pressure and Vacuum decay gauge
- 3 Flow gauge
- 4 On/Off button with 5 minute timer
- 5 Electrical connection indicator lights
- 6 10' supply hose and electrical cord
- 7 Sturdy impact resistant housing
- 8 Smoke solution filling port

Essential features:

- ▶ Compact (33 x 30,5 x 33 cm tall)
- ▶ Lightweight (8,6 kg)
- ▶ Operates off vehicle (12 V) battery
- ▶ Full featured machine with graduated smoke flow control valve, air flow meter, and pressure/vacuum decay gauge
- ▶ Full complement of accessories with storage case
- ▶ Multi-purpose tester designed for leak detection in any low pressure closed system; usable to pinpoint wind and water leaks of passenger and trunk areas
- ▶ OEM approved smoke test technology
- ▶ Designed for safe use in any vehicle; will not damage vehicle components or void any factory warranty
- ▶ Uses UltraTraceUV® dye solution to create Diagnostic Smoke®; the only OEM approved solution
- ▶ Dye deposit is UV light-traceable (light included w/kit)

Kit	Order Number
SMT 300	0 684 102 300

Scope of delivery:

- ▶ Leakfinder SMT 300 with hose and nozzle
- ▶ Canister UltraTraceUV®
- ▶ Cap plug kit
- ▶ Adapter Cone
- ▶ Smoke distributor
- ▶ Combined light with glasses
- ▶ Schrader remover/installer

Accessories	Order Number
Universal Neck Adapter	1 681 335 125
BMW-Mini Neck Adapter	1 681 335 122
Preset 100 psi Regulator*	1 687 417 104
Cylinder Hose*	1 687 032 381

*For use with larger inert gas bottles found in shops

Technical data	
Operating pressure	0.035 bar
Compressed air connection	3.4 – 12 bar
Power supply	12 Volt DC
Weight	Approx. 8.6 kg
Hose length	2,400 mm
Tank for UltraTraceUV® smoke solution	

Replacement parts for kit	Order Number
Smoke Solution	F 00E 900 348
Cap Plug Set	1 680 322 069
Exhaust Cone	1 681 334 039
Smoke Diffuser	1 681 390 002
Light	1 687 550 078
Glasses	1 682 777 092
Schrader Valve Tool	1 687 012 181
Rubber hose	1 680 703 080

Robert Bosch GmbH
Automotive Aftermarket
Business Unit Automotive Service Solutions

73201 Plochingen
Germany
www.bosch-workshopworld.com